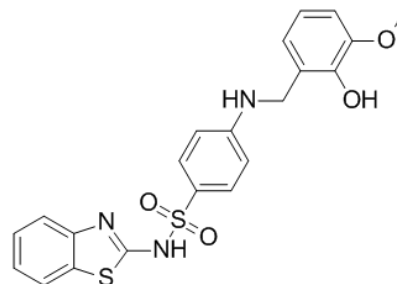


**Product Name** : ML355  
**Cat. No.** : PC-42990  
**CAS No.** : 1532593-30-8  
**Molecular Formula** : C<sub>21</sub>H<sub>19</sub>N<sub>3</sub>O<sub>4</sub>S<sub>2</sub>  
**Molecular Weight** : 441.5233  
**Target** : Lipoxygenase  
**Solubility** : DMSO: ≥ 42 mg/mL



### Biological Activity

ML355 (VLX-1005) is a potent, and selective inhibitor of human 12-Lipoxygenase (**12-LOX**) with IC<sub>50</sub> of 290 nM. ML355 displays >100-fold selectivity over 15-LOX-1, 15-LOX-2, 5-LOX and COX1, COX2. ML355 has favorable ADME properties, inhibits PAR-4 induced aggregation and calcium mobilization in human platelets, and reduces 12-HETE in mouse/human beta cells.

### References

- Luci D, et al. Probe Reports from the NIH Molecular Libraries Program [Internet].  
Ma K, et al. *J Clin Endocrinol Metab*. 2017 May 10. doi: 10.1210/Jc.2017-00267.  
Luci DK, et al. *J Med Chem*. 2014 Jan 23;57(2):495-506.

**Caution: Product has not been fully validated for medical applications. Lab Use Only!**

E-mail: tech@probechem.com